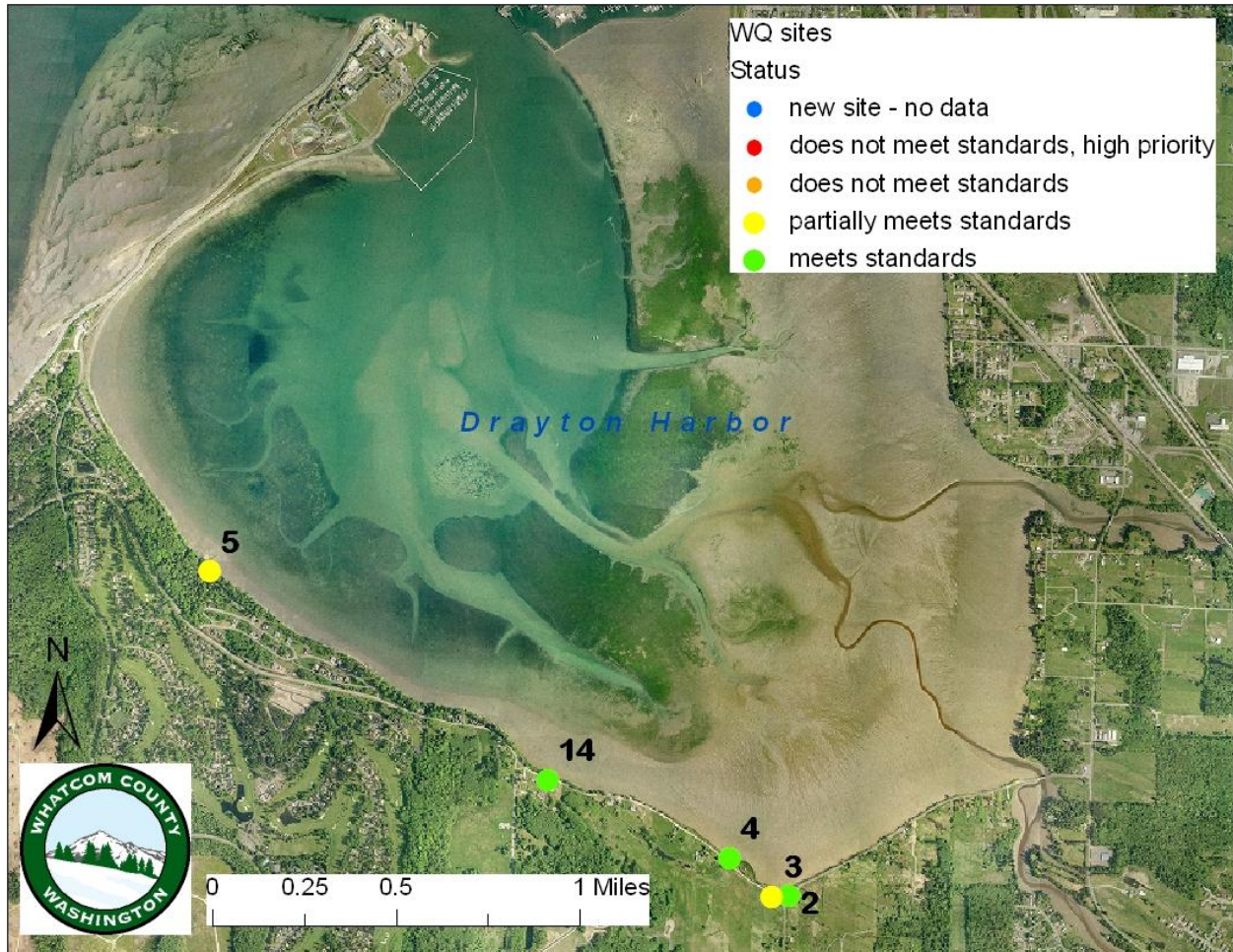




Drayton Harbor Water Quality Monitoring Summary

Water Quality Status 6/22/06-9/16/09



Site	Number of samples	GeoMean (cfu/100ml)	Minimum (cfu/100ml)	Maximum (cfu/100ml)	% > 200 cfu/100ml	Status
DH14	13	51	7	TNTC/250	8	●
DH2	24	11	1	740	8	●
DH3	24	64	7	4700	17	●
DH5	22	41	4	1010	18	●
DH4	15	12	1	201	7	●

Washington State Fecal Coliform Standards for Fresh Water Draining into Drayton Harbor Watershed:

- Geometric mean < 100 colonies/100mL
- No more than 10% of the samples > 200 colonies/100mL